



Fresno Unified
School District



Community Engagement Workshop

January/February 2020



Purpose

Collect input from a diverse group of school and community representatives, to help refine district plans to improve student outcomes.



Workshop Outline



- Planning – Local Control & Accountability Plan (LCAP)
- Funding – Local Control Funding Formula (LCFF)
- Investments & Initiatives – Progress Report
- Performance Outcomes – California School Dashboard
- Stakeholder Engagement and Feedback

Local Control and Accountability Plan (LCAP)



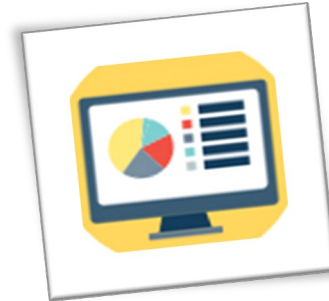
Each district's LCAP must include the following:

- ✓ Goals
- ✓ Actions
- ✓ Related Expenditures



LCAPs must address the 8 State Priorities:

1. Basic services
2. Implementation of standards
3. Parental engagement
4. Student achievement
5. Student engagement
6. School climate
7. Access to courses
8. Other student outcomes



LCAPs include services that target major student subgroups, including:

- ✓ Racial/ethnic subgroups
- ✓ Low-income students
- ✓ English learners
- ✓ Students with disabilities
- ✓ Foster youth
- ✓ Homeless youth

Local Control Funding Formula (LCFF)



BASE GRANTS

LCFF Provides a base grant, which funds basic educational costs, such as teacher salaries, retirement costs, instructional materials, etc.



SUPPLEMENTAL GRANTS

LCFF provides additional grants which equate to 20% above the base grant for students living in disadvantaged circumstances: English Learners, foster youth and students living in poverty. These funds must be used to increase or improve services



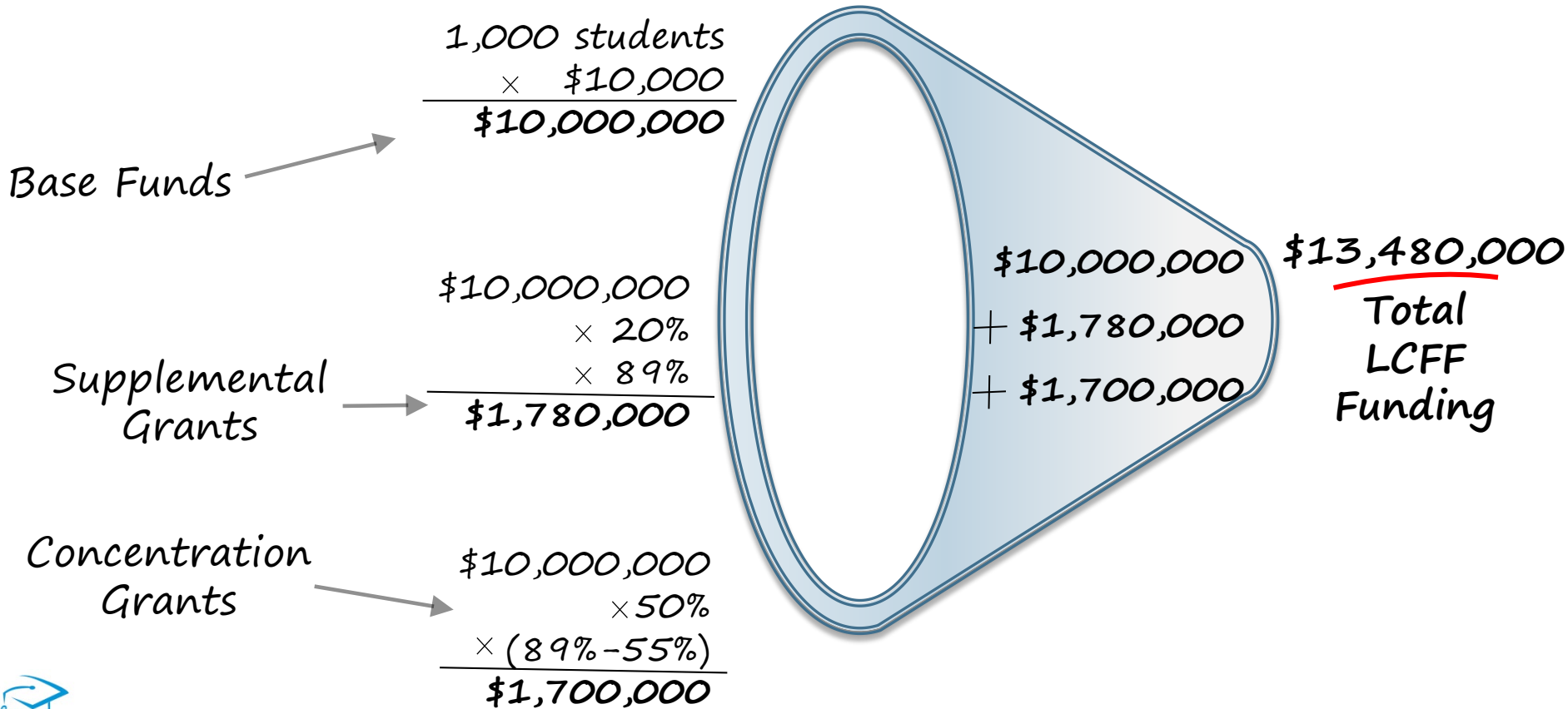
CONCENTRATION GRANTS

In districts where at least 55% of students are disadvantaged, LCFF provides an additional grant which equates to 50% above base funding. These funds must also be spent to increase or improve services

Local Control Funding Formula (LCFF)



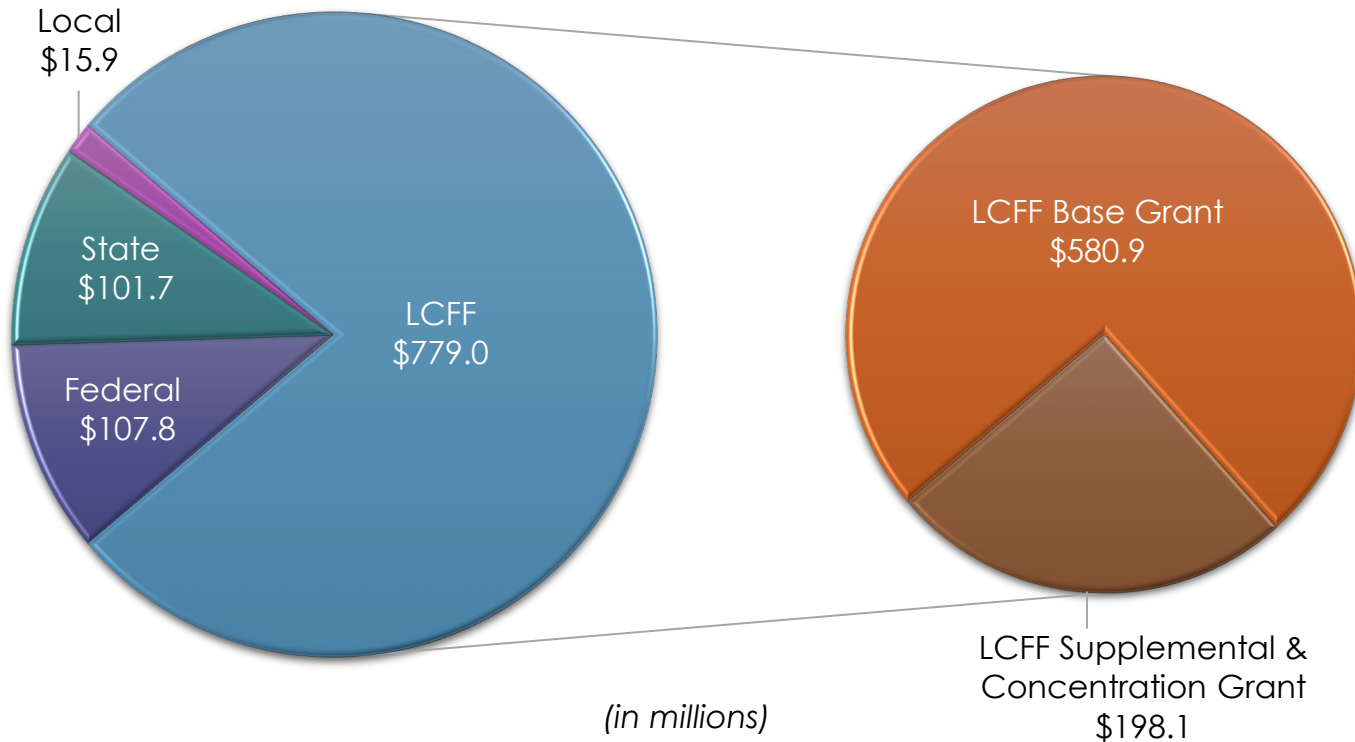
A sample district, with 1,000 students and 89% of them living in disadvantaged circumstances. The base funding amount for this example is \$10,000



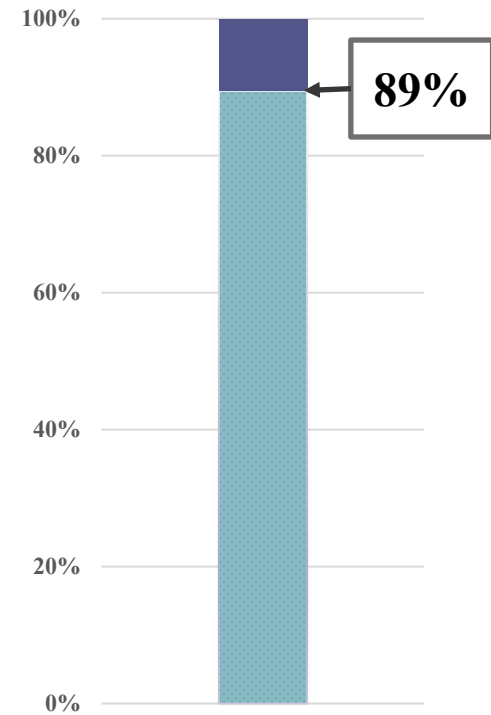
Local Control Funding Formula (LCFF)



2019/20 Adopted Revenue Sources (General Fund)



Students Living in Disadvantaged Circumstances





LCAP Progress Report

The cover of the LCAP Progress Report features a collage of images. At the top left is the Fresno Unified School District logo and the LCAP 2017-20 logo. The top half shows a group of diverse children smiling and making peace signs. The bottom half shows a woman and a young girl holding a sign that says "UCLA BRUINS HILL" next to a man and a young boy looking at a laptop. The text on the cover includes:

LCAP Progress Report
December 2019

Supplemental & Concentration Funds
TOTAL = \$199M

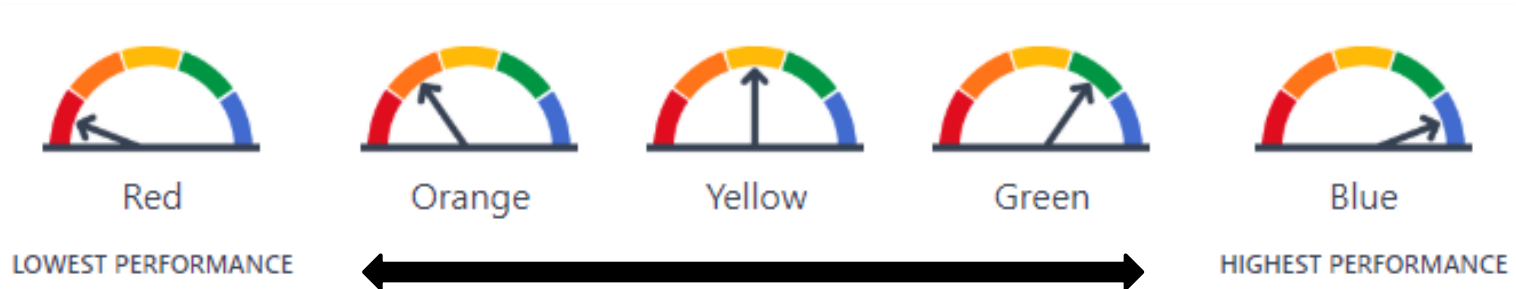


	Action #		2019/20 Budget
<p>Goal 1: All students will excel in reading, writing and math</p>	 <p>14</p>	<p>Further Develop Early Childhood Education</p> <ul style="list-style-type: none"> ➤ Nearly 4,000 students served in early learning programs ➤ Increased instructional aide support 	<p>\$14.2M</p>
<p>Goal 2: All students will participate in arts, activities and athletics</p>	<p>35</p>	<p>Increased Funding for Music</p> <ul style="list-style-type: none"> ➤ Additional teaching positions enable music instruction in the 2nd through 6th grade 	<p>\$1.2M</p>
<p>Goal 3: All students will demonstrate the character and competencies for workplace success</p>	<p>38</p>	<p>Linked Learning, ROP and CTE Pathway Development</p> <ul style="list-style-type: none"> ➤ 24 Linked Learning pathways and 148 CTE courses districtwide, 13,000 middle and high school students enrolled 	<p>\$19.7M</p>
<p>Goal 4: All students will stay in school, on track to graduate</p>	 <p>50</p>	<p>Mental Health Support</p> <ul style="list-style-type: none"> ➤ Five new School Psychologist positions hire ➤ Over the last three years, 15 new School Psychologists have been added 	<p>\$3.1 M</p>

<https://www.caschooldashboard.org/>

The California School Dashboard provides parents and educators with meaningful information on school and district progress on various Indicators so they can participate in decisions to improve student learning.

- An online tool that presents:
 - **Status** (Very High to Very Low)
 - **Change** (improved or declined from prior year)
 - **Student Groups** (e.g., race/ethnicity and program participation)
- Released annually each fall





DISTRICT PERFORMANCE OVERVIEW

Fresno Unified

Explore the performance of Fresno Unified under California's Accountability System.

Generate PDF Report

View All Schools

View Additional Reports

2019

Chronic Absenteeism



Orange

Suspension Rate



Orange

English Learner Progress



No Performance Color

Graduation Rate



Yellow

College/Career



Orange

English Language Arts



Yellow

Mathematics



Yellow

Basics: Teachers, Instructional Materials, Facilities

STANDARD MET

Implementation of Academic Standards

STANDARD MET

Parent and Family Engagement

STANDARD MET

Local Climate Survey

STANDARD MET

Access to a Broad Course of Study

STANDARD MET

Local Control and Accountability Plan (LCAP) Survey



<https://www.fresnounified.org/dept/stafed/Pages/lcff.aspx>

- Three languages
- Opportunity to provide your feedback

Scan with your camera phone



The screenshot shows the website for Fresno Unified School District, specifically the State and Federal Programs page. The main content area features a large circular logo for the Local Control & Accountability Plan (LCAP) 2017-20. Below the logo, the text reads: **Take the LCAP Survey!** followed by the heading Local Control and Accountability Plan Community Engagement. The text below explains that the district values input from stakeholders and uses this feedback throughout the development of the LCAP. It also lists dates for community engagement workshops.

Local Control and Accountability Plan Community Engagement

Fresno Unified School District values input from various stakeholders and uses this feedback throughout the development of the Local Control and Accountability Plan (LCAP). The LCAP is a plan that describes the district's overall vision for student success and includes investment actions aimed at improving student outcomes.

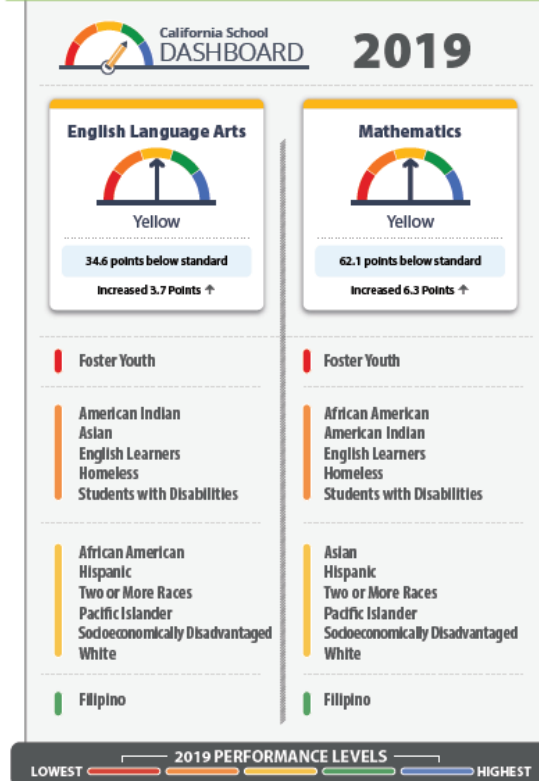
Listed below are dates for the LCAP community engagement workshops, where stakeholders can hear updates on initiatives, review districtwide student performance data and provide feedback that will help inform future investment priorities.

Stakeholder Engagement and Feedback



Fresno Unified School District

GOAL 1: All Students will excel in reading, writing and math



2019/20 Investments:

- NEW/EXPANDED Further Develop Early Childhood Education: \$14.2M**
Nearly 4,000 students are being served throughout the district's early learning programs.
- Additional Supports for Libraries: \$0.5M**
- Equity and Access: \$2.0M**
"Pivot" teams have been created and support schools identified under the State of California's new accountability model.
- GATE / Advanced Placement (AP) / International Baccalaureate (IB) / SAT/ PSAT Fees: \$2.3M**
The district pays for all student testing fees to ensure equitable access to academic opportunities.
- Expand Alternative Education: \$1.3M**
Providing alternative options for students at risk of failing to graduate.
- Maintain Additional Services for Phoenix Community Day School: \$2.2M**
Expelled students or those at risk of being expelled receive in-depth academic and social-emotional interventions.
- After School Tutoring: \$7.1M**
- Extended Summer Learning: \$9.3M**
Summer learning opportunities
- Supports for Students in Foster Care: \$2.3M**
Supports in service to the district's foster and homeless youth.
- All teachers are teachers of English Learner (EL) students: \$13.4M**
Resources directed to and in support of the district's English language learner students.
- Expansion of Dual Language Immersion Programs: \$1.7M**
Programs focus on equipping students with the ability to speak, read and write in two languages.
- African American Academic Acceleration: \$4.0M**
Resources to provide a rigorous and responsive academic learning environment for African American students.

Stakeholder Engagement and Feedback

