



Fresno Unified
School District



Community Discussion: Local Control and Accountability Plan (LCAP)

Fall 2023

ICE BREAKER

**CONSIDER FOR A
MOMENT:
WHAT DOES YOUR
CHILD NEED AT
SCHOOL TO BE
SUCCESSFUL?**



WHAT WE WILL COVER

- Purpose
- What is the Local Control and Accountability Plan?
- What is the Executive Summary
- What is the Local Control Funding Formula
- What does FUSD do with your input?
- Listening to Educational Partners
- How can you participate in the process?
- What's new this year?
- ThoughtExchange
- Questions



PURPOSE

WE NEED INPUT FROM YOU! OUR EDUCATIONAL PARTNERS

Objective:

Collect input from a diverse group of school and community representatives, to help refine district plans to improve student outcomes



Education Code: 52060

The governing board of a school district shall consult with teachers, principals, administrators, other school personnel, local bargaining units of the school district, parents, and pupils in developing a local control and accountability plan.



WHAT IS THE LCAP?

Local Control and Accountability Plan (LCAP)

- Three-year plan
- Structure provided by the California Department of Education
- Reflects District's Values
- Outlines Goals, Actions and Expenditures
- Requires the District work with staff, students, families and the community
- Adopted for the upcoming year by the District's Board in June

Local Control and Accountability Plan

The instructions for completing the Local Control and Accountability Plan (LCAP) follow the template.

Local Educational Agency (LEA) Name	Contact Name and Title	Email and Phone
Fresno Unified School District	Robert Nelson, Superintendent	Bob.Nelson@fresnounified.org (559) 457-3882

Plan Summary 2023/24

General Information

A description of the LEA, its schools, and its students in grades transitional kindergarten–12, as applicable to the LEA.

Fresno Unified School District (Fresno Unified) is the third largest school district in California located in the Central Valley. The district serves more than 73,000 students from preschool through grade 12. Fresno Unified nurtures and cultivates the interests of students by providing an excellent and equitable education in a culturally proficient environment. The district serves a diverse population, where students, families, and staff are valued and empowered. In total, students attending Fresno Unified schools reflect the celebrated diversity of Fresno, with families speaking 59 different languages.

Fresno Unified values the vast array of people that comprise our community. Students are encouraged to become lifelong learners, demonstrating positive behaviors and personal accountability. Many Fresno families face extraordinary circumstances, including extreme low-income. To promote progress, Fresno Unified established goals for students, staff, and families with objectives that are actionable and measurable as part of a District Strategic Plan. This plan guides program evaluation and equitable allocation of resources to enrich academic performance, expand learning experiences, and increase inclusive opportunities for students and their families. All of this is with the goal of helping students achieve their greatest potential.

The District's full LCAP Plan can be found here:

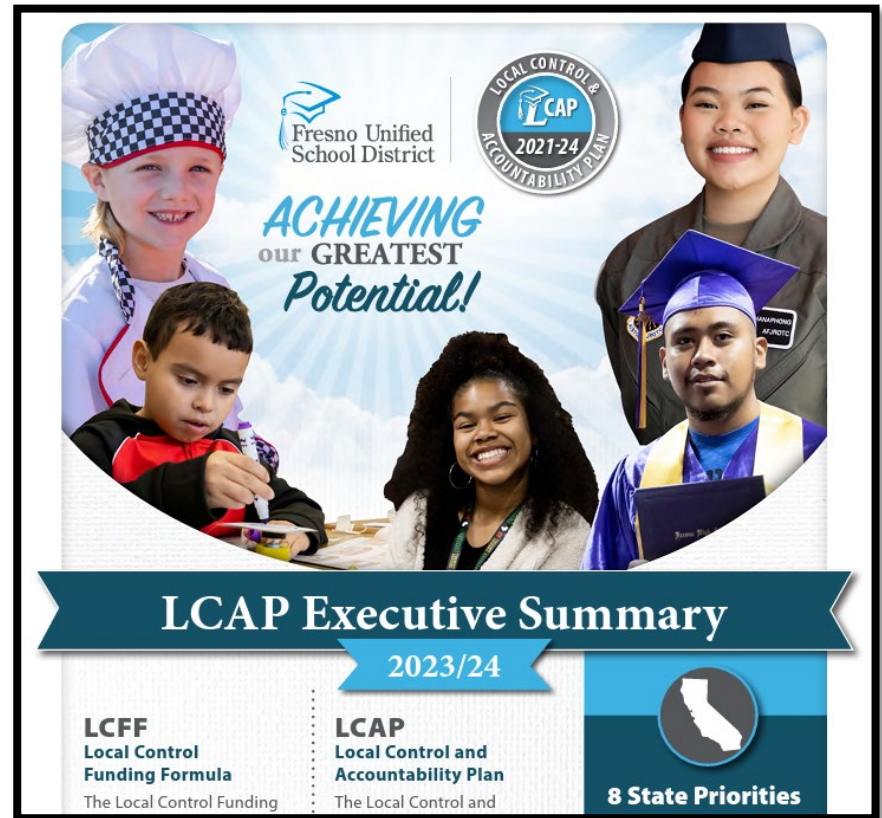
<https://stafed.fresnounified.org/lcap/>

WHAT IS THE EXECUTIVE SUMMARY?

Because of the length and complexity of the District's LCAP, a short summary was created with key information.

This document is called the **LCAP Executive Summary**.

Beginning this year, copies of this summary can be found in English, Spanish and Hmong at Fresno Unified school sites.

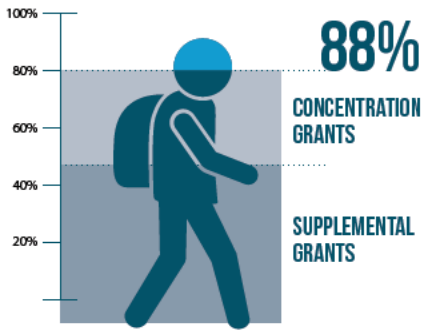


View the LCAP Executive Summary
<https://stafed.fresnounified.org/lcap/>

WHAT IS THE LOCAL CONTROL FUNDING FORMULA?

The Local Control Funding Formula is the formula that the State of California uses to provide funding for school districts. It represents almost 60% of the District's General Fund

STUDENTS LIVING IN DISADVANTAGED CIRCUMSTANCES



In Fresno Unified, 88% of student's are English language learners, foster youth or students whose families live below the federal poverty level.



BASE GRANTS



LCFF provides a base grant, which funds basic educational costs, such as teacher salaries, retirement costs, instructional materials, etc.



SUPPLEMENTAL GRANTS +20%



LCFF provides supplemental grants which equate to 20% above the base grant for English learner, foster youth and low-income students.



CONCENTRATION GRANTS +65%

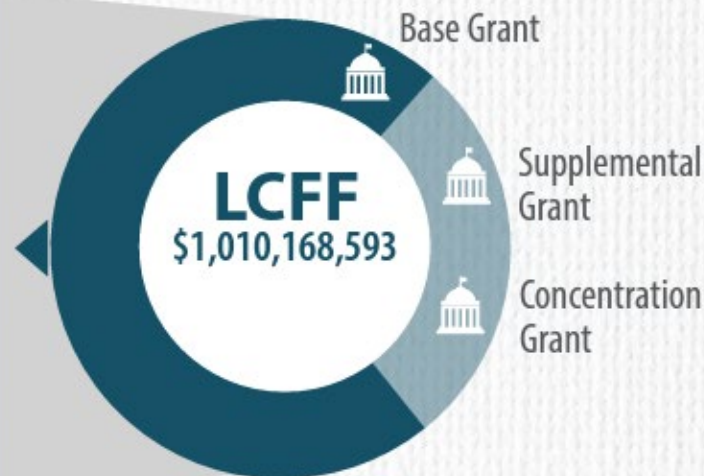


In districts with at least 55% of English learners, foster youth, or low-income students. LCFF provides an additional grant which equates to 65% above base funding.



WHAT IS THE LOCAL CONTROL FUNDING FORMULA?

Financial



Federal ● \$369,696,729

State ● \$298,165,335

Local ● \$25,509,251

LCFF ● \$1,010,168,593

TOTAL \$1,703,539,908



Base Grant

► \$730,090,140

Supplemental
& Concentration Grants

► \$280,078,453



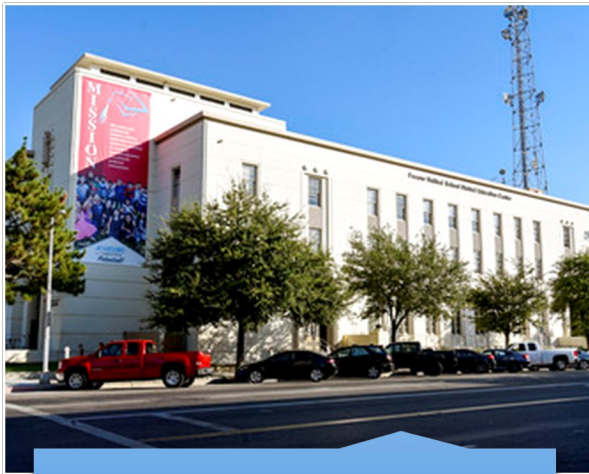
LOCAL CONTROL FUNDING FORMULA- LCFF

PAUSE AND REFLECT

**AS YOU LOOK AT THE
EXECUTIVE
SUMMARY, CHOOSE
1-2 ACTIONS THAT
YOU FEEL ARE
IMPORTANT**



WHAT DOES FUSD DO WITH YOUR INPUT?



Influence the Budget Development



Feedback Impacts Program Improvement



Promotes Transparency and Accountability

LISTENING TO EDUCATIONAL PARTNERS AND INVESTING IN STUDENTS

TOP THEMES FROM EDUCATIONAL PARTNERS



LCFF

ACADEMICS



STUDENT NUTRITION

CURRENT DISTRICT INVESTMENTS

Investments include Credit Recovery, Dual Enrollment, Dual Language Programs, Designated Schools, and Tutor.com

The Cafeteria Fund provides 70,000 meals each day (Breakfasts, Lunches, Snacks, Super Snacks). Additionally, 550,000 summer meals are served annually

INVESTMENTS FOR 2023/24

- Technology Upgrades
- Library/Literacy Initiatives
- TK Expansion

- 9 Executive Chefs
- Meal Options/Food Prep at Elementary
- Equipment Purchases

 Denotes an investment from Local Control Funding Formula, Supplemental and Concentration Funds

LISTENING TO EDUCATIONAL PARTNERS AND INVESTING IN STUDENTS

TOP THEMES FROM EDUCATIONAL PARTNERS



LCFF

MENTAL AND PHYSICAL HEALTH



LCFF

STUDENT ENGAGEMENT



LCFF

SAFETY

CURRENT DISTRICT INVESTMENTS

Investments include School Psychologists, Resource Counseling Assistants, Social Workers, Restorative Practices, and Student Peer Mentors

Investments to support Enrichment Trips, Arts and Music, Mentoring Programs, Increased Child Welfare and Attendance Specialists, and High School Graduation

Investment supports Additional Campus Safety Assistants at High Schools and identified Middle Schools

INVESTMENTS FOR 2023/24

- 7.5 FTE Nurses and 10 FTE LVN
- 3.0 FTE Tier II Specialists
- 5.0 FTE Behavioral and Restorative Supports

- Athletic Equipment and Bridge Academy
- Increase Elementary Engagement
- Graduation Supports

- 37.2 FTE Campus Safety Assistants
- Professional Learning – Restorative Practices

LCFF

Denotes an investment from Local Control Funding Formula, Supplemental and Concentration Funds



LCAP COMMUNITY MEETINGS

ALL MEETINGS WILL START AT 5:00 PM

OCTOBER

➤ EDISON	OCT. 10, 2023
➤ FRESNO	OCT. 11, 2023
➤ ROOSEVELT	OCT. 24, 2023
➤ MCLANE	OCT. 25, 2023
➤ SUNNYSIDE	OCT. 26, 2023

NOVEMBER

➤ BULLARD	NOV. 7, 2023
➤ HOOVER	NOV. 8, 2023



***FOOD, BABYSITTING AND
TRANSLATION WILL BE PROVIDED***

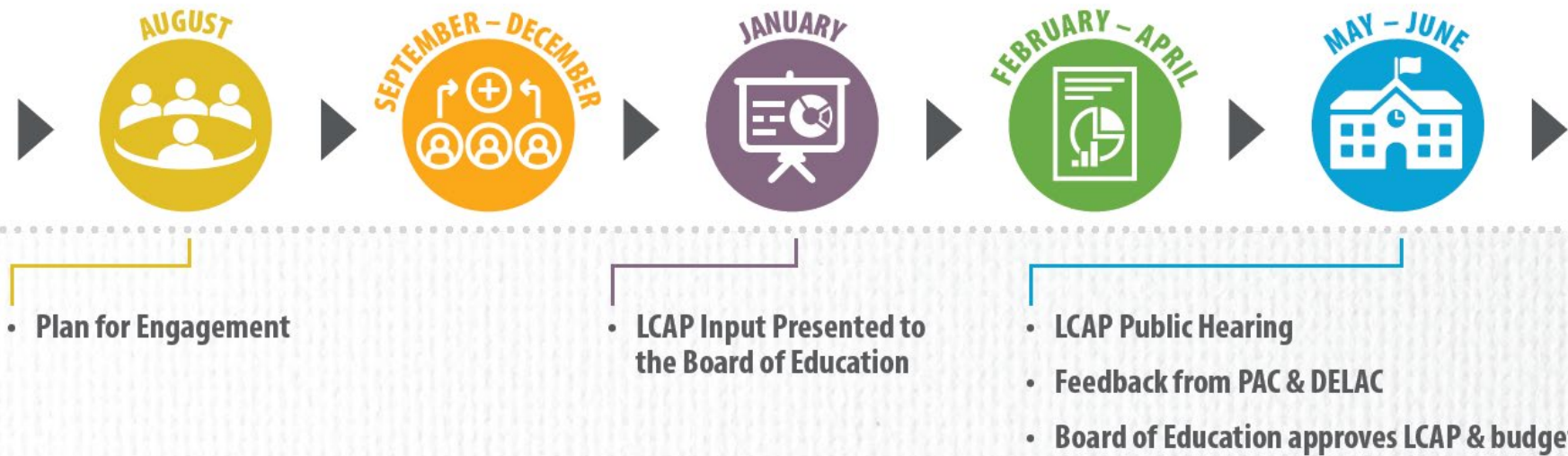
LCAP PLANNING AND ENGAGEMENT TIMELINE

Key Point:

The final authority for all budget decisions at Fresno Unified School District is the Board of Education

- Connect with Community

- FUSD Writes First Draft of the LCAP Plan
- Receive Input on the Draft
- Revise and Update Draft



“By presenting your input in a way that harmonizes with the structure of the LCAP, you make it easier for the school district to turn your priorities into plans and actions”

-California State PTA

WHAT'S NEW



Provide **Homeless Youth** Targeted Social Emotional and Academic Interventions

HOMELESS YOUTH	YEAR 2 OUTCOME	2023/24 DESIRED OUTCOMES	NEW INVESTMENTS:
SBAC - ELA	-118.0	-105.7	• Academic Counselors
SBAC - MATH	-151.9	-139.9	• Clinical School Social Workers
Chronic Absenteeism	82.4%	59.9%	• Child Welfare and Attendance Specialists
Suspension Rate	12.9%	12.8%	

- *It's Easy!*
- *It's Fun!*
- *It's Confidential!*

Fresno Unified Wants to know: As we start the school year, what are the most important things our district needs to think about in order to support all students?



Participants share answers to open-ended questions



Participants consider ideas from others and add stars to the ones they like best



Everyone discovers what is important to the group

Let's walkthrough and complete a ThoughtExchange together:

Use your smartphone to
scan the QR Code



Use your computer or tablet to join online or
click the link below

<https://my.thoughtexchange.com/scroll/795764557/welcome>

1

Type **tejoin.com** or scan the QR code

2

Type in the 9-digit code and click join:

795-764-557

QUESTIONS



For questions or comments, please contact:

Fresno Unified School District Office of State & Federal Programs

<https://stafed.fresnounified.org/lcap/>

(559) 457-3934

Ashlee.Chiarito@fresnounified.org

Vicente.Cantu@fresnounified.org

Miguel.vega@fresnounified.org