



Fresno Unified  
School District

Fresno Housing – Session #1



## Community Discussion: Local Control and Accountability Plan (LCAP)

Fall 2022

# WHAT WE WILL COVER

## Session #1

- Activity
- What is the Local Control and Accountability Plan?
- What is the Executive Summary
- What is the Local Control Funding Formula
- Looking at Fresno Unified Goals, Outcomes and Expenditures
- Questions
- ThoughtExchange



# ICE BREAKER

**CONSIDER FOR A  
MOMENT:  
WHAT IS YOUR  
BIGGEST WISH FOR  
YOUR CHILDREN?**



# PURPOSE

## WE NEED INPUT FROM YOU! OUR EDUCATIONAL PARTNERS

### **Objective:**

*Collect input from a diverse group of school and community representatives, to help refine district plans to improve student outcomes*



**Education Code: 52060**  
*The governing board of a school district shall consult with teachers, principals, administrators, other school personnel, local bargaining units of the school district, parents, and pupils in developing a local control and accountability plan.*

# WHAT IS THE LCAP?

## Local Control and Accountability Plan (LCAP)

- Three-year plan
- Structure provided by the California Department of Education
- Reflects District's Values
- Outlines Goals, Actions and Expenditures
- Requires the District work with staff, students, families and the community
- Adopted for the upcoming year by the District's Board in June

### Local Control and Accountability Plan

The instructions for completing the Local Control and Accountability Plan (LCAP) follow the template.

Local Educational Agency (LEA) Name	Contact Name and Title	Email and Phone
Fresno Unified School District	Robert Nelson, Superintendent	<a href="mailto:Bob.Nelson@fresnounified.org">Bob.Nelson@fresnounified.org</a> (559) 457-3882

### Plan Summary 2022/23

#### General Information

A description of the LEA, its schools, and its students in grades transitional kindergarten–12, as applicable to the LEA.

Fresno Unified School District (Fresno Unified) is the third largest school district in California located in the Central Valley. The district serves more than 73,000 students from preschool through grade 12. Fresno Unified nurtures and cultivates the interests of students by providing an excellent and equitable education in a culturally proficient environment. The district serves a diverse population, where students, families, and staff are valued and empowered. In total, students attending Fresno Unified schools reflect the celebrated diversity of Fresno, with families speaking 59 different languages.

Fresno Unified values the vast array of people that comprise our community. Students are encouraged to become lifelong learners, demonstrating positive behaviors and personal accountability. Many Fresno families face extraordinary circumstances, including extreme poverty. To promote progress, Fresno Unified established goals for students, staff, and families with objectives that are actionable and measurable as part of a District Strategic Plan. This plan guides program evaluation and equitable allocation of resources to enrich academic performance, expand learning experiences, and increase inclusive opportunities for students and their families. All of this is with the goal of helping students achieve their greatest potential.

The District's full LCAP Plan can be found here:

<https://stafed.fresnounified.org/lcap/>

# WHAT IS THE EXECUTIVE SUMMARY?

Because of the length and complexity of the District's LCAP, a short summary was created with key information.

This document is called the **LCAP Executive Summary**.

Beginning this year, copies of this summary can be found in English, Spanish and Hmong at Fresno Unified school sites.

**Fresno Unified School District**

**LOCAL CONTROL & ACCOUNTABILITY PLAN 2021-24**

**ACHIEVING**  
our **GREATEST**  
*Potential!*

**LCAP Executive Summary**  
**2022/23**

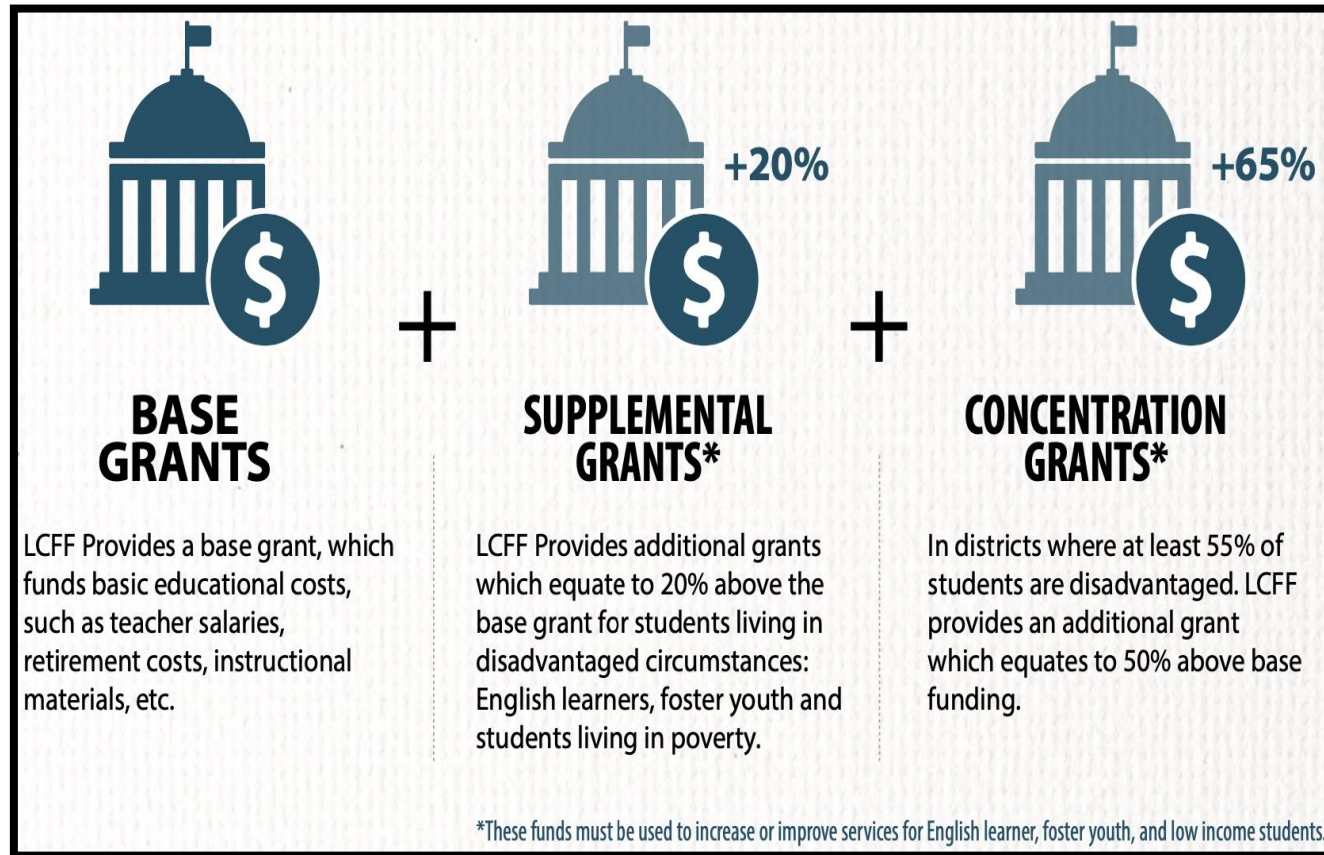
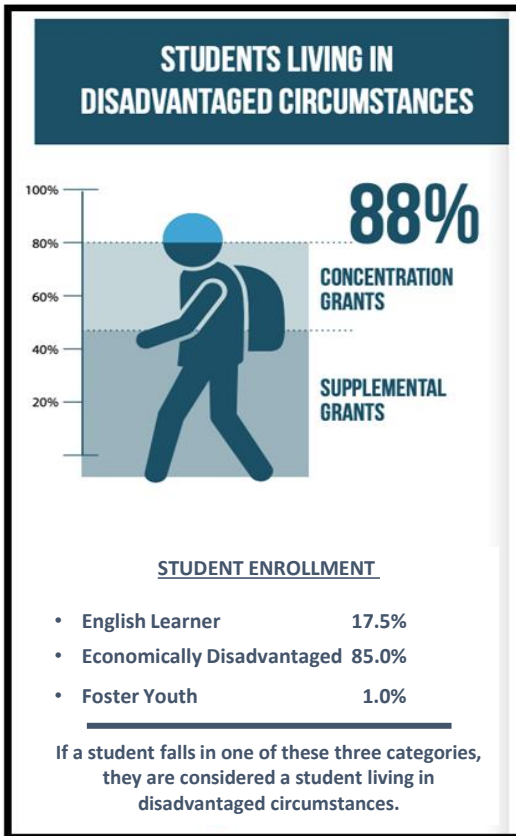
**LCFF**  
**Local Control Funding Formula**  
The Local Control Funding Formula (LCFF) is California's

**LCAP**  
**Local Control and Accountability Plan**  
The Local Control and Accountability Plan (LCAP)

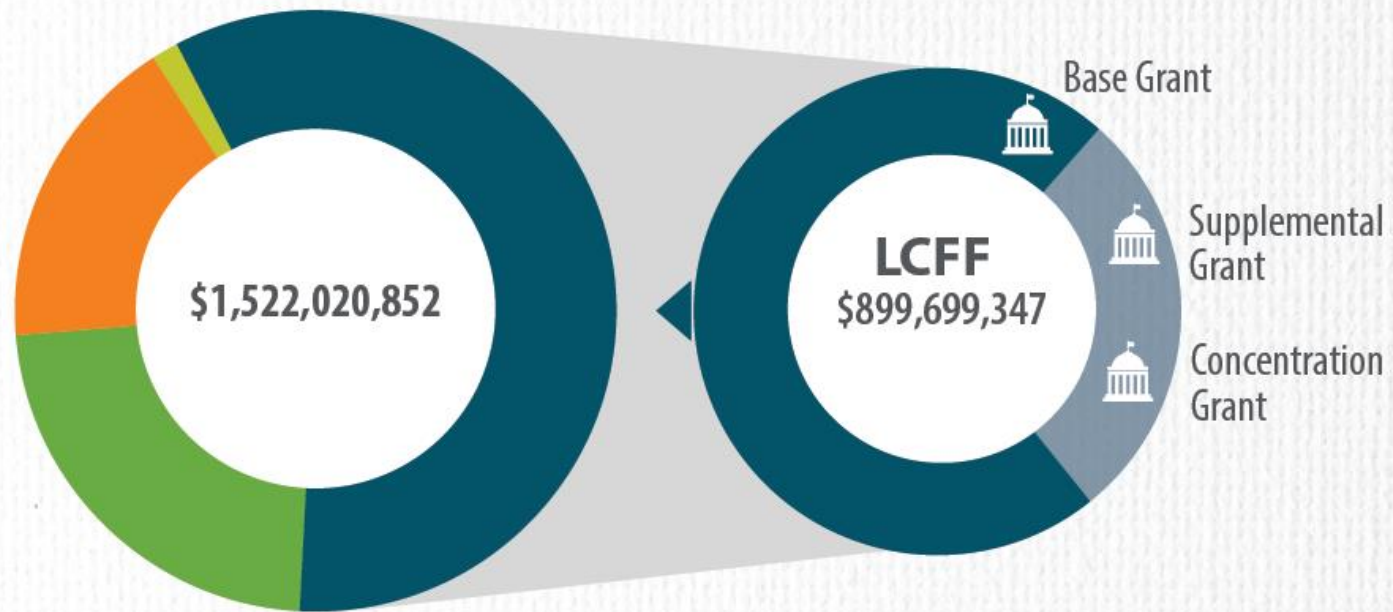
**8 State Priorities**  
1. Basic Services

# WHAT IS THE LOCAL CONTROL FUNDING FORMULA?

The Local Control Funding Formula is the formula that the State of California uses to provide funding for school districts. It represents almost 60% of the District's General Fund



# WHAT IS THE LOCAL CONTROL FUNDING FORMULA?



- Federal ● \$342,818,761
- State ● \$257,589,458
- Local ● \$21,913,286
- LCFF ● \$899,699,347**

**TOTAL \$1,522,020,852**

	Base Grant	\$650,253,344
		+
	Supplemental & Concentration Grants	\$249,446,003

**LOCAL CONTROL FUNDING FORMULA- LCFF**



# PAUSE AND REFLECT

**AS YOU LOOK AT THE  
EXECUTIVE  
SUMMARY, WHAT  
STRIKES YOU AS  
MOST INTERESTING?**





# GOAL for Student

– Improve academic performance at challenging levels

**M** Million

Ongoing Initiatives

New/ Expanded Initiatives for 2022/23

- Designated School Investment: \$24.3M**
- Additional Teacher Supply Funds: \$1.3M**
- Middle & High School Redesign: \$11.9M**
- Eliminate Elementary Combination Classes: \$6.5M**
- National Board Certification: \$0.1M**
- Instructional Supports and Instructional Coaches: \$21.0M**
- Additional Teachers Above Base Staffing: \$15.7M**
- Additional School Site Administration above Base: \$4.6M**
- African American Academic Acceleration: \$4.0M**
- Early Childhood Education Developmental Screening: \$20.9M**
- Additional Supports for Libraries: \$0.5M**
- Equity & Access: \$2.6M**
- GATE (Gifted and Talented Education)/ AP (Advanced Placement)/IB (International Baccalaureate): \$5.3M**
- Expand Alternative Education: \$2.1M**

English Language Arts  
iReady 3: On or above grade level

2021/22 34.4% ▼  
2020/21 35.6%

2023/24 Desired Outcome 38.9%

Math  
iReady 3 On or above grade level

2021/22 28.3% ▼  
2020/21 28.6%

2023/24 Desired Outcome 31.9%

English Learner  
Progress

2021/22 N/A  
2018/19 45.9%

2023/24 Desired Outcome 49.2%

English learner  
Redesignation

2020/21 1.4% ▼  
2019/20 10.4%

Meet/Exceed State Redesignation Rate



# GOAL for Student

- Improve academic performance at challenging levels *(Continued)*

**M** Million

Ongoing Initiatives

**NEW/EXPANDED** New/ Expanded Initiatives for 2022/23



**Maintain Additional Services for Phoenix Community Day School: \$4.9M**



**Expansion of Dual Language Immersion Programs: \$2.1M**



**BASE: Equity and Access: \$3.3M**



**After School Tutoring: \$58.8M**



**BASE: Instruction: \$363.4M**



**High Quality School Site Health Services: \$12.2M**



**Extended Summer Learning: \$57.5M**



**BASE: Professional Learning: \$70.4M**



**Instructional Lead Teachers: \$0.2M**



**All teachers are teachers of English learner (EL) students: \$15.3M**



**BASE: Technology Access and Support: \$15.7M**



**Upgrading Access to Technology: \$2.2M**



**Student Technology Access and Annual Refresh: \$0.1M**

English Language Arts  
iReady 3: On or above grade level

2021/22 34.4% ▼  
2020/21 35.6%

2023/24 Desired Outcome 38.9%

Math  
iReady 3 On or above grade level

2021/22 28.3% ▼  
2020/21 28.6%

2023/24 Desired Outcome 31.9%

English Learner  
Progress

2021/22 N/A  
2018/19 45.9%

2023/24 Desired Outcome 49.2%

English learner  
Redesignation

2020/21 1.4% ▼  
2019/20 10.4%

Meet/Exceed State Redesignation Rate





# GOAL for Student

– Expand student centered and real-world learning experiences

**M** Million

Ongoing Initiatives

**NEW/EXPANDED** New/ Expanded Initiatives for 2022/23



**Linked Learning, ROP, and CTE Pathway Development: \$22.0M**



**CTE STEM PK-6 Kids Invent!: \$1.4M**



**Men's and Women's Alliance: \$1.6M**



**School Counselors and Resource Counseling Assistants: \$17.6M**



### A-G Completion Rates

2020/21 51.8% ▼  
2019/20 54.0%

2023/24 Desired Outcome 56.4%

### % of Students who pass AP exam with a score of 3 or higher

2020/21 19.6% ▼  
2019/20 27.4%

2023/24 Desired Outcome 30.7%

### Middle school dropout rate

2020/21 0.8% ▼  
2019/20 0.5%

2023/24 Desired Outcome 0.5%

### High school dropout rate

2020/21 8.7% ▼  
2019/20 8.3%

2023/24 Desired Outcome 8.0%

### High school graduation rate

2020/21 87.6% ▼  
2019/20 88.2%

2023/24 Desired Outcome 90.5%



# GOAL for Students

– Increase student engagement in their school and community

**M** Million

Ongoing Initiatives

New/ Expanded Initiatives for 2022/23

Increase School Allocations for Athletics: \$14.5M

District-Funded Educational Enrichment Trips: \$4.6M

District Arts Collaborative Project: \$0.1M

Increased Funding for Music: \$1.7M

Student Peer Mentor Program: \$0.8M

Social Emotional Supports: \$3.5M

School Climate and Culture Expansion: \$7.2M

Restorative Practices / Relationship Centered Schools: \$3.7M

BASE: Department of Prevention and Intervention: \$7.1M

Campus Climate and Culture Teachers: \$1.1M

Home School Liaisons: \$5.3M

Mental Health Supports: \$10.1M

Expanded Transportation Services: \$1.9M

School attendance rate

2020/21 87.5% ▼  
2019/20 91.9%

2023/24 Desired Outcome 93.6%

Chronic absenteeism

2020/21 25.4% ▼  
2018/19 15.8%

2023/24 Desired Outcome 14.2%

% students enrolled in any engagement in school and community

2020/21 32.2% ▼  
2019/20 59.7%

2023/24 Desired Outcome 71.5%

Student suspension rate

2020/21 0.2% ▲  
2018/19 7.0%

2023/24 Desired Outcome 6.0%

Student expulsion rate

2020/21 0.0% ▲  
2018/19 0.2%

2023/24 Desired Outcome 0.18%



## GOAL for Families

- Increase inclusive opportunities for families to engage in their students' education

M Million



Ongoing Initiatives



New/ Expanded Initiatives for 2022/23



Parent Engagement Investments:  
\$3.8M



Expanded Student, Parent and  
Community Communication: \$0.9M





# GOAL for Foster Youth

**M** Million

Ongoing Initiatives

**NEW/EXPANDED** New/ Expanded Initiatives for 2022/23

Provide foster youth targeted social emotional and academic interventions to increase graduation rates.



**Supports for Foster Youth/ Projects Access: \$3.8M**



### Graduation Rate

2020/21	61.3% ▼
2019/20	65.5%

2023/24 Desired Outcome 69.8%



# GOAL for Students with Disabilities

**M** Million

Ongoing Initiatives

**NEW/EXPANDED** New/ Expanded Initiatives for 2022/23

Provide Students and their families/ guardians with transition planning resources and options for pathways towards post-secondary and employment opportunities.

**Regional Instructional Managers for Students with Disabilities: \$2.5M**

**Early Learning Interventions: \$4.7M**

**Base: Special Education: \$185.9M**



### Graduation Rate

2020/21 64.4% ▼  
2019/20 66.3%

2023/24 Desired Outcome 70.4%

### College and Career Readiness

2018/19 7.3% ▼  
2017/18 8.1%

Meet or exceed the state rate



# QUESTIONS

Email: [Tammy.Townsend@fresnounified.org](mailto:Tammy.Townsend@fresnounified.org)

or

Call the Office of State and Federal Programs  
(559) 457-3676



# TRY THOUGHT EXCHANGE!

*It's Easy!*

*It's Fun!*

*It's Confidential!*

*Fresno Unified Wants to know: As we plan for the next school year, what are the most important things our district needs to think about in order to support all students?*



Participants share answers to open-ended questions



Participants consider ideas from others and add stars to the ones they like best



Everyone discovers what is important to the group

# TRY THOUGHTEXCHANGE!

Two ways to participate on your phone:

- Use your camera to scan the QR Code
- Log into [tejoin.com](https://tejoin.com) and type in the following number: 601-064-789

