



Fresno Unified  
School District



# Parent Advisory Committee (PAC): Local Control and Accountability Plan (LCAP)

Fall 2022

# WHAT WE WILL COVER

- Purpose
- What is the Local Control and Accountability Plan?
- What is the Executive Summary
- What is the Local Control Funding Formula
- What does FUSD do with your input?
- Listening to Educational Partners
- How can you participate in the process?
- ThoughtExchange
- Questions



# PURPOSE

## WE NEED INPUT FROM YOU! OUR EDUCATIONAL PARTNERS

### **Objective:**

*Collect input from a diverse group of school and community representatives, to help refine district plans to improve student outcomes*



**Education Code: 52060**  
*The governing board of a school district shall consult with teachers, principals, administrators, other school personnel, local bargaining units of the school district, parents, and pupils in developing a local control and accountability plan.*

# WHAT IS THE LCAP?

## Local Control and Accountability Plan (LCAP)

- Three-year plan
- Structure provided by the California Department of Education
- Reflects District's Values
- Outlines Goals, Actions and Expenditures
- Requires the District work with staff, students, families and the community
- Adopted for the upcoming year by the District's Board in June

### Local Control and Accountability Plan

The instructions for completing the Local Control and Accountability Plan (LCAP) follow the template.

Local Educational Agency (LEA) Name	Contact Name and Title	Email and Phone
Fresno Unified School District	Robert Nelson, Superintendent	<a href="mailto:Bob.Nelson@fresnounified.org">Bob.Nelson@fresnounified.org</a> (559) 457-3882

### Plan Summary 2022/23

#### General Information

A description of the LEA, its schools, and its students in grades transitional kindergarten–12, as applicable to the LEA.

Fresno Unified School District (Fresno Unified) is the third largest school district in California located in the Central Valley. The district serves more than 73,000 students from preschool through grade 12. Fresno Unified nurtures and cultivates the interests of students by providing an excellent and equitable education in a culturally proficient environment. The district serves a diverse population, where students, families, and staff are valued and empowered. In total, students attending Fresno Unified schools reflect the celebrated diversity of Fresno, with families speaking 59 different languages.

Fresno Unified values the vast array of people that comprise our community. Students are encouraged to become lifelong learners, demonstrating positive behaviors and personal accountability. Many Fresno families face extraordinary circumstances, including extreme poverty. To promote progress, Fresno Unified established goals for students, staff, and families with objectives that are actionable and measurable as part of a District Strategic Plan. This plan guides program evaluation and equitable allocation of resources to enrich academic performance, expand learning experiences, and increase inclusive opportunities for students and their families. All of this is with the goal of helping students achieve their greatest potential.

*The District's full LCAP Plan can be found here:*

<https://stafed.fresnounified.org/lcap/>

# WHAT IS THE EXECUTIVE SUMMARY?

Because of the length and complexity of the District's LCAP, a short summary was created with key information.

This document is called the **LCAP Executive Summary**.

Beginning this year, copies of this summary can be found in English, Spanish and Hmong at Fresno Unified school sites.

**Fresno Unified School District**

**LOCAL CONTROL & ACCOUNTABILITY PLAN 2021-24**

**ACHIEVING**  
our **GREATEST**  
*Potential!*

**LCAP Executive Summary**  
**2022/23**

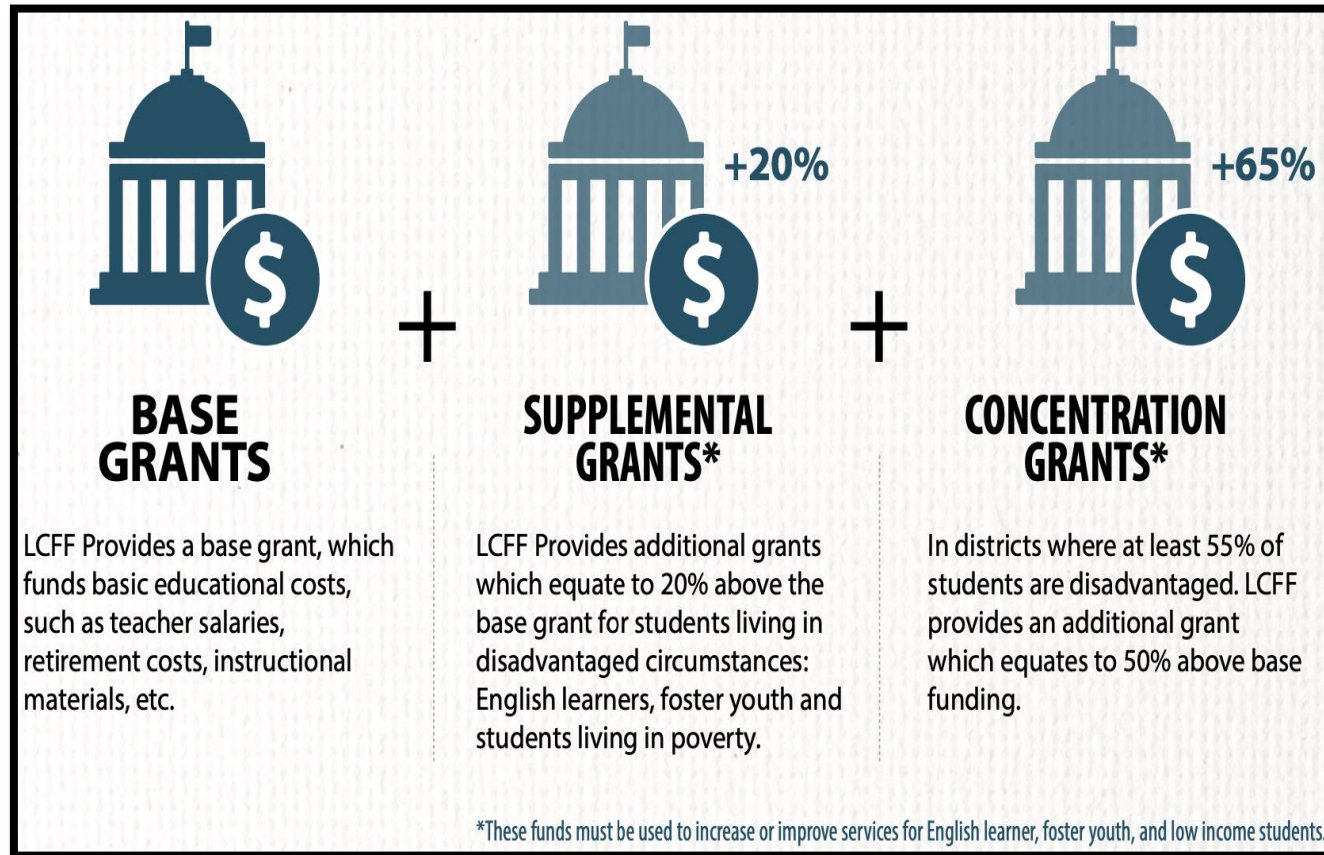
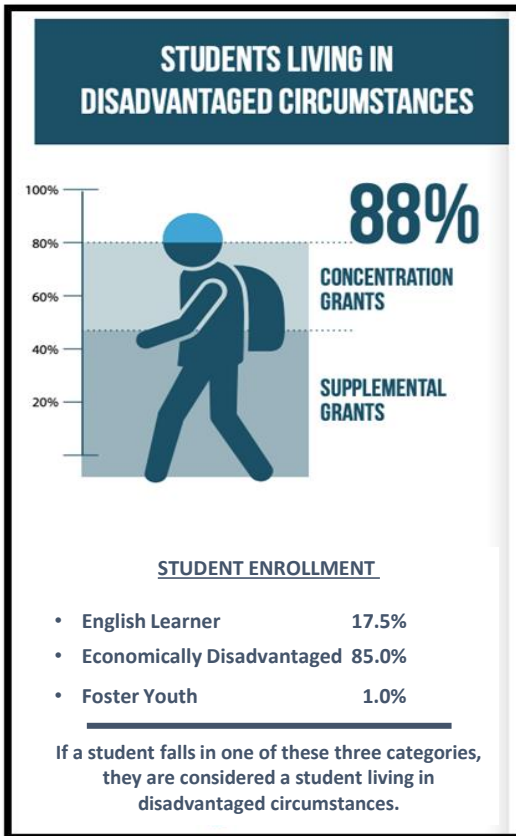
**LCFF**  
**Local Control Funding Formula**  
The Local Control Funding Formula (LCFF) is California's

**LCAP**  
**Local Control and Accountability Plan**  
The Local Control and Accountability Plan (LCAP)

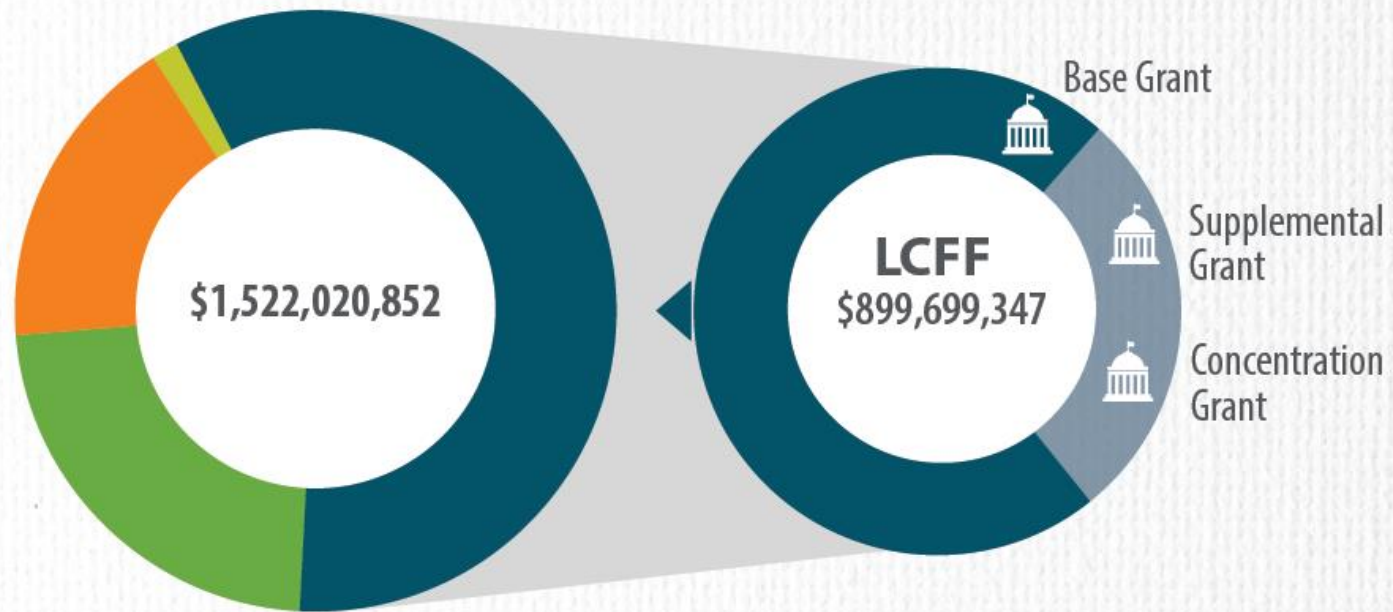
**8 State Priorities**  
1. Basic Services

# WHAT IS THE LOCAL CONTROL FUNDING FORMULA?

The Local Control Funding Formula is the formula that the State of California uses to provide funding for school districts. It represents almost 60% of the District's General Fund



# WHAT IS THE LOCAL CONTROL FUNDING FORMULA?



- Federal ● \$342,818,761
- State ● \$257,589,458
- Local ● \$21,913,286
- LCFF ● \$899,699,347

**TOTAL \$1,522,020,852**

	Base Grant	\$650,253,344
		+
	Supplemental & Concentration Grants	\$249,446,003

**LOCAL CONTROL FUNDING FORMULA- LCFF**

# WHAT DOES FUSD DO WITH YOUR INPUT?



Influence the Budget  
Development



Feedback impacts  
Program Improvement



Promotes Transparency  
and Accountability



# LISTENING TO EDUCATIONAL PARTNERS

THEMES FROM EDUCATIONAL PARTNERS	CURRENT DISTRICT INVESTMENTS	PROPOSED ADDITIONS FOR 2022/23	
<b>MENTAL HEALTH/ SOCIAL EMOTIONAL</b>	Investment includes Social Workers, Resource Counseling Assistants, Restorative Practices, School Psychologists & other supports	<ul style="list-style-type: none"> <li>• 27 FTE School Psychologists</li> <li>• Confidential Office Space at Schools</li> <li>• 10 FTE Resource Counseling Assistants</li> </ul>	<b>\$30.7M</b>
<b>STUDENT NUTRITION</b>	The Cafeteria Fund provides 98,000 meals each day: 27,000 breakfasts, 58,000 lunches, 7,500 snacks and 5,500 Super Snacks. Additionally, 222,000 summer meals served annually	<ul style="list-style-type: none"> <li>• Replace/Upgrade Meal Preparation Equipment</li> <li>• New Cafeteria and Outdoor Tables</li> </ul>	<b>\$6.4M</b>
<b>READING/LANGUAGE SUPPORT</b>	Investment to support the district's English learners with supplemental supports & services. Additionally, \$2 million invested to expand Dual Language Programs	<ul style="list-style-type: none"> <li>• 65 FTE Instructional Coaches</li> <li>• Student Mentors for English learners</li> <li>• Increased professional learning</li> </ul>	<b>\$9.1M</b>
<b>POST SECONDARY SUPPORTS</b>	Investments to support ROP, Linked Learning, and CTE pathway development. Additionally, Kids Invent programs to promote STEM learning	<ul style="list-style-type: none"> <li>• 15 FTE Counselors</li> <li>• Additional student internships</li> </ul>	<b>\$2.8M</b>







Investment from Local Control Funding Formula (LCFF), Supplemental and Concentration Funds

**M** Million



# LISTENING TO EDUCATIONAL PARTNERS

THEMES FROM EDUCATIONAL PARTNERS	CURRENT DISTRICT INVESTMENTS	PROPOSED ADDITIONS FOR 2022/23	
<b>SUPPORTS FOR STUDENT GROUPS</b>	Specialized funding to support foster youth, English learners, African American students, early learners, students with disabilities, students with behavior challenges and others  	<ul style="list-style-type: none"> <li>• Student backpacks and supplies</li> <li>• 10 FTE Social Workers for foster youth</li> <li>• 15 FTE Regional Instructional Managers</li> </ul>	<b>\$5.6M</b>
<b>HEALTH AND SAFETY</b>	Investments include Personal Protective Equipment, Cleaning and Sanitization, Campus Safety Assistants, School Health Services, and School Resource Officers 	<ul style="list-style-type: none"> <li>• 23 FTE Campus Safety Assistants</li> <li>• HVAC Upgrades</li> <li>• 2 FTE Staff for Health Services</li> </ul>	<b>\$32.4M</b>
<b>SCHOOL CLIMATE</b>	Investments include school climate and culture staff, as well as investments in family engagement 	<ul style="list-style-type: none"> <li>• 9.6 FTE Campus Climate and Culture Teachers</li> <li>• New team for Translation / Interpretation</li> </ul>	<b>\$1.9M</b>



Investment from Local Control Funding Formula (LCFF), Supplemental and Concentration Funds

**M** Million



# LISTENING TO EDUCATIONAL PARTNERS

THEMES FROM EDUCATIONAL PARTNERS	CURRENT DISTRICT INVESTMENTS	PROPOSED ADDITIONS FOR 2022/23	
<b>ATTENDANCE AND ENGAGEMENT</b>	Investments include Child Welfare and Attendance Specialists, athletics, enrichment trips, arts, music, mentoring programs	<ul style="list-style-type: none"> <li>• 47 FTE Child Welfare and Attendance Specialists</li> <li>• Expanding Music Programs to Kindergarten</li> </ul>	<b>\$3.7M</b>
<b>TECHNOLOGY</b>	Investments in Technology hardware, access and support	<ul style="list-style-type: none"> <li>• Data Center security and infrastructure</li> <li>• Classroom interactive panels</li> <li>• School / Neighborhood Wi-Fi Expansion</li> <li>• Expanded FLATS centers to support technology use</li> </ul>	<b>\$33.5M</b>
<b>AFTER SCHOOL</b>	After School Programs at all schools	<ul style="list-style-type: none"> <li>• Free, non-lottery-based programs</li> <li>• Community Based Organization Collaboration</li> <li>• Increased Funding for Supplies</li> </ul>	<b>\$1.3M</b>



Investment from Local Control Funding Formula (LCFF), Supplemental and Concentration Funds

**M** Million



# HOW CAN YOU PARTICIPATE IN THE PROCESS?

OCTOBER/  
NOVEMBER

JANUARY/  
FEBRUARY

APRIL/  
MAY

JUNE

## GET INVOLVED

- Attend a Regional Townhall
- Participate in a ThoughtExchange
- Get involved in your School Site Council

## DEEPER DIVE

- Look for a Board Presentation on Education Partner feedback
- Consider taking a “deeper dive” on key topics

## DRAFT LCAP

- First draft of the LCAP available online for feedback and comments
- Meet with District Parent Committees for feedback

## PUBLIC HEARING

- Public Hearing for the LCAP and District Budget
- LCAP Adoption
- Executive Summary Available

*“By presenting your input in a way that harmonizes with the structure of the LCAP, you make it easier for the school district to turn your priorities into plans and actions”*

*-California State PTA*

# COMMUNITY TOWNHALLS

## OCTOBER

➤ MCLANE	OCT. 13, 2022
➤ SUNNYSIDE	OCT. 18, 2022
➤ EDISON	OCT. 27, 2022

## NOVEMBER

➤ ROOSEVELT	NOV. 1, 2022
➤ FRESNO	NOV. 7, 2022
➤ HOOVER	NOV. 8, 2022
➤ BULLARD	NOV. 10, 2022

**ALL MEETINGS WILL START AT 5:00 PM**

**FOOD, BABYSITTING AND TRANSLATION WILL BE PROVIDED**



# TRY THOUGHT EXCHANGE!

*It's Easy!*  
*It's Fun!*  
*It's Confidential!*

*Fresno Unified Wants to know: As we plan for the next school year, what are the most important things our district needs to think about in order to support all students?*



Participants share answers to open-ended questions



Participants consider ideas from others and add stars to the ones they like best



Everyone discovers what is important to the group

# TRY THOUGHTEXCHANGE!

Two ways to participate on your phone:

- Use your camera to scan the QR Code
- Log into [tejoin.com](https://tejoin.com) and type in the following number:

**601-064-789**



# QUESTIONS

Email:  
[Tammy.Townsend@FresnoUnified.org](mailto:Tammy.Townsend@FresnoUnified.org)  
**(559) 457-3676**

